

Formwork & Scaffolding Systems

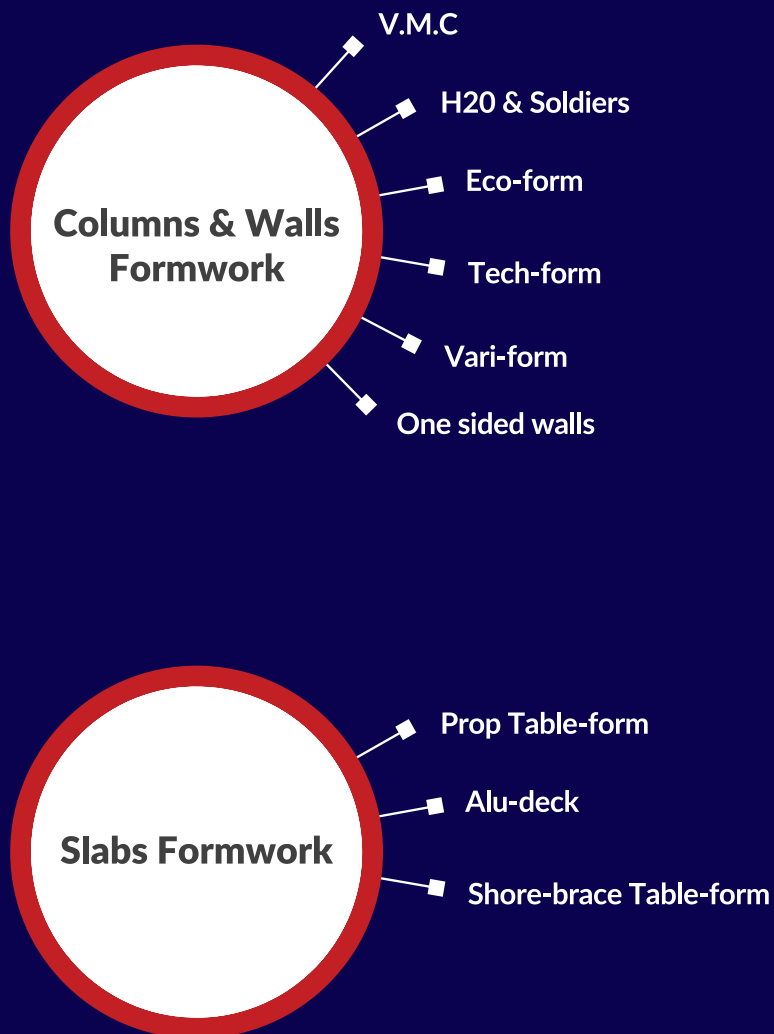
ACROW 
Integrated Construction Services



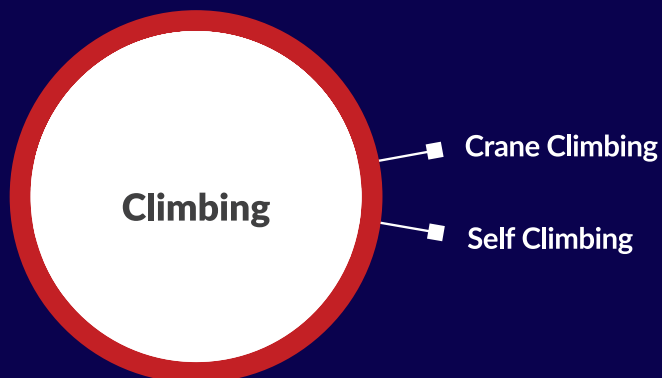
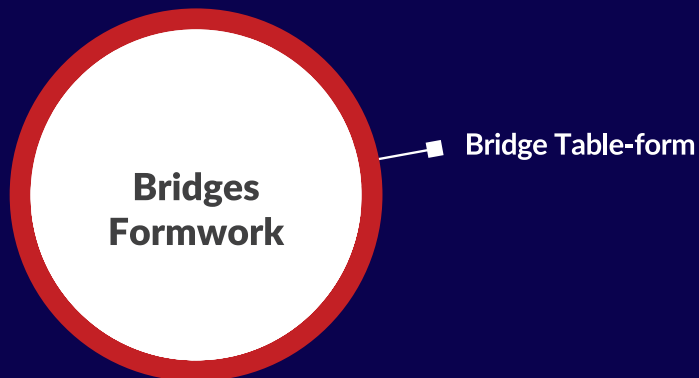
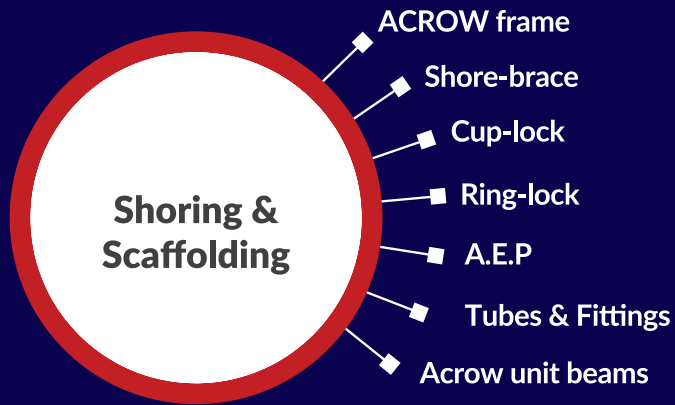


www.aics-eg.com

Formwork & Scaffolding Systems



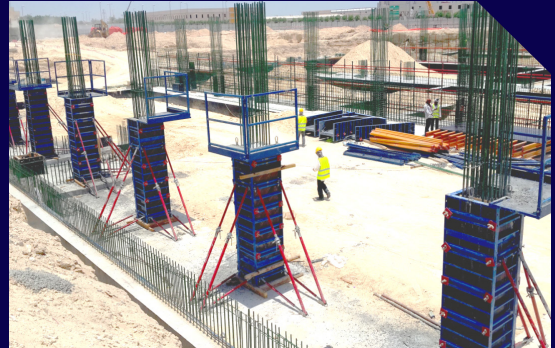
Formwork & Scaffolding Systems



► Formwork & Scaffolding Systems – Columns & Walls Formwork

► Acrow V.M.C. System

- V.M.C. is a man-handled column system.
- It is very suitable when crane is not available.
- The flexibility of column cross section - 5 cm increments-makes it easy to be adjusted without re-assembly.
- For safety, the system is equipped with a concreting platform



► H20 & Soldiers System



- ACROW H20 & Soldiers System is the most flexible system and the most cost effective solution for wall formwork.
- The element size-grid and tie-hole pattern provide the adaptability needed to accommodate architectural demands.
- The high flexure stiffness of ACROW H20 wooden beam and Steel Soldiers can often be used to speed up shuttering by optimizing the formwork panels and minimizing the number of tie points.
- From industrial structures to housing and from bridge abutments to retaining walls, ACROW H20 & Soldiers shutters any layout and height up to 18 m with a single unit.

► Eco-form System



- Eco-Form System is a light weight panel innovative system where a range of panels and accessories are responsible for quick and economical framing of any vertical concrete shape in the buildings.
- Moreover, due to the lightness and high-quality materials of the Eco-Form System, it could be either manual or crane handled for extraordinary performance.
- Eco Form System is the best solution for foundations, cellar tanks, low retaining walls, parapets and small areas. This perfection returns mainly to the sturdy elements which are actually light inweight and handy enabling Eco Form System to be on top of the solutions used for such applications.
- Moreover, what makes it easier to be used in high walls is the flexibility of the panels to be stacked upright or sideways to fit the intended purpose smoothly.

► Tech-form System

- ACROW Tech Form Panel System with its highly engineered steelprofile is specially designed to suit a variety of applications for concrete columns and walls adapting it to any structure.
- The panels are manufactured and designed to be durable, economical and with high load capacity and flexibility which results in providing high cost efficiency and fast work flow.
- Also, the superb quality Powder Coating finish provides the system with a unique level of protection, hence longer life span.



► Vari-form System

- Vari Form System is a panel wall system used for curved and rounded walls.
- It has very easy adjustable Turn Buckles allowing a curve with minimum diameter 3.00 m.
- Only two levels of Turn Buckles are used for 3.60 m wall height.



► One sided walls

- It's a wall formwork system where it is not possible to place Tie-rods which take the Concrete forces coming to Wall Formwork Panels. System Supporting Elements enable the concrete forces to be transferred safely through embedded anchors and rear pressure jack.
- For heights up to 4.0 m, only Vertical, horizontal and Anchor Soldiers with Push-Pull Props are used in addition to anchors and rear pressure jacks, which means few, simple and economic components are used.
- For heights up to 7.60 m, ACROW supporting brace frames are used. Integrated types of frames are stacked together to support different wall heights.
- For heights up to 10.0 m, ACROW trusses are used. The main advantage that the

system is mainly composed of ACROW soldiers integrated together to form trusses, which means normal wall formwork site components are used in addition to accessories



► Formwork & Scaffolding Systems – Slabs Formwork

► Prop Table form

- Given sufficient crane capacity, slabtables are the most cost-effective solution where there is a high degree of repetition and open facades.
- Acrow prop tables are easy and practical to set up and can be shifted and adapted very quickly. This makes them a cost-effective and efficient way of carrying out large-area slab projects.

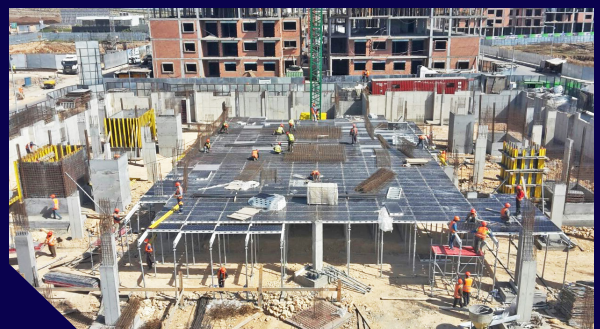


► Alu-deck system

- ACROW Alu-deck System is a slab system that covers most slab form methods in just one system. This means using the same parts in the different applications, also mixing different Alu-deck methods - MIP & PMD - depending on the requirements of the floor plan.
- The client can choose between separate plywood (MIP method) or panels with implemented 12 mm birch plywood (PMD method).
- Also reduction of the labor cost is achieved due to the few intensive adjustments at the job site.
- The simplicity of the system reduces

handling mistakes and is safer for the workers.

- The beams and panels are all made of Aluminum and are powder coated.



► Shorebrace table form

- Due to its high load capacity, Shore-brace Table Form System is one of the most economical table systems used for heavy civil engineering projects.
- Vertical adjustment can be done either by Post Head Jack in case of heavy structure or by prop extension.



- The Shore-brace Table Form System is composed of standard components that can be used in different projects and different systems.

► Formwork & Scaffolding Systems – Shoring & Scaffolding

► Acrow Frames

- Acrow Frame system is one of the most popular and widely propagated through nearly all Modern Construction Projects it can be used as shoring System for slabs, as facade for external plaster, GRC, Paintings and for Grandstand also.
- The system is fully comprehensive and includes safety guard rails when required.
- Castor Wheels and outriggers are also available for Mobile tower applications.



- Acrow frame system has been specially designed for easy and fast assembly by unskilled operatives with the minimum of supervision.
- The basic system utilizes a small number of components that are simply and easily fitted together to give a rigid structure.

► Shorebrace

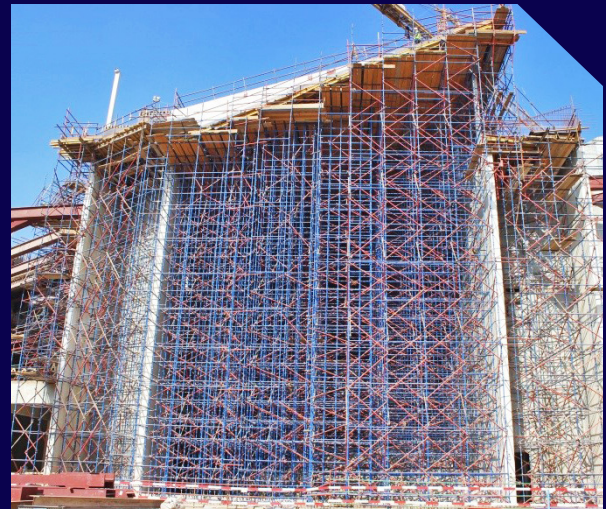
- It is characterized by the use of one basic size of shorebrace frame (180 cm high and 120 cm wide) combined with cross braces in order to obtain economic spacing of frames. Moreover, the telescopic shorebrace frame gives various height adjustments, which can be obtained with a minimum of component parts to offer high carrying load capacity towers for heavy slab construction at all heights.



- In addition, the telescopic shorebrace frame is combined with a fully solid jacks at top and bottom of towers.
- Vertical tube diameter of 60.3mm combined with the telescopic shorebrace frame with an outside tube diameter of 48.3 mm offers Maximum safe working load per vertical leg of 5.4 tons.

► Cup-lock

- ACROW Cup-Lock System is a complete system that provides access scaffolding and formwork slab support.
- This formwork slab support can be used in a wide variety of applications from light to heavy duty scaffolding and shoring for buildings and other civil engineering work. In addition, no loose fittings are required. A hammer is the only tool required for the erection and dismantling of the system.
- Several accessories ensure the adaptability of the system to a wide variety of applications.
- The Standard is the vertical member of ACROW Cup-Lock System and is made from



a high grade steel tube with outer diameter of 48.3 mm and thickness of 3.2 mm.

- A series of bottom cups are welded at nominal 500 mm centers and a free top cup to provide a safe connection at any direction for the horizontal ledger attachment.
- Cup-lock vertical standards vary from 0.5 m to 3.0 m.
- The Ledger is the horizontal member used to connect the Standards in both the longitudinal and transversal directions. It is made of the same diameter of the vertical tube. Ledgers fit in the bottom cup located in the Standard and their sizes vary from 0.6 m to 2.4 m.

► Ring-lock

- ACROW Ring Lock System is one of the most popular and widely used systems for most newly constructed projects.
- It can be used to act as a shoring system for slabs and as scaffolding for facades.
- The hot dip galvanization of the system extends the service life of the system components.
- The system components are light and could be man handled easily. The system also conforms to the latest occupational safety standards to provide the clients with applicable and cost effective solutions for the whole requirements.



- It is composed of a perforated steel disc with 4 small openings for ledger positions and 4 wide openings for aligning the Ledgers and the diagonal braces at angles.
- The vertical ring standard has different lengths, from 0.5 m to 3.0 m with 0.5 m increments.
- The Ledger is the horizontal member used to connect the standards in both the longitudinal and transversal directions. Ledger sizes vary from 0.6 m to 2.4 m.

► A.E.P

- ACROW European Prop (AEP) is designed to be used as a support element for decking.
- The AEP is a hot dip galvanized prop having high durability and high load capacity. It also provides permanent prevention against unintentional disengagement.
- The inner and outer parts of a prop are prevented permanently from being separated except by intentional action. It has an Anti-Hand Trap. When the prop is fully closed without the pin inserted, there is 100 mm clearance between the endmost part of the outer tube and the inner tube.



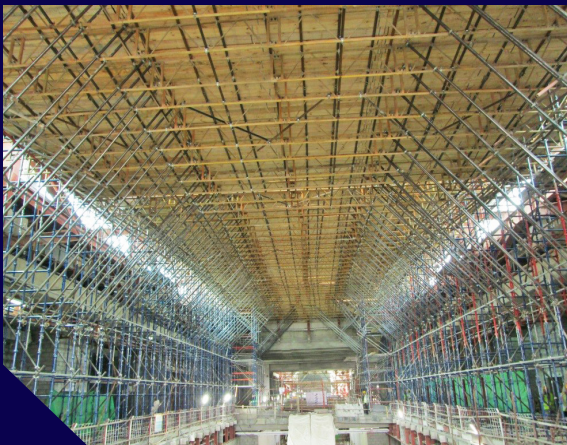
► Tubes & Fittings

- It is the most common and flexible system used for building scaffolds from the ground or suspended.
- The system consists of scaffolding tubes , couplers , timber boards and steel ladders. With these components you can build any shape of scaffold you need.
- Acrowscaffolding tubes comply with EN39 : 2001 and couplers comply with EN74.
- Acrow also provides LVL scaffold timber boards which have more quality and durability than the ordinary timber used for boarding.



► Acrow Unit Beams

- The perfect solution for suspended scaffolding and for bridging.
- Acrow unit beam consists of top and bottom chords made of tubes 1.5" x 4mm (thick.) and brace tubes welded to them to give at the end a high inertia value that allows the unit beam to be loaded with a long span that reaches 14m.



- Acrow unit beams can be used with scaffolding tubes and couplers to build a full scaffold system that can make any required shape of scaffolds.

► Formwork & Scaffolding Systems – Bridges Formwork

► Bridges Table-form

- ACROW Bridge Table is one of the best solutions used for any box girder bridge.
- Bridge deck system (H20 & Soldier) consist of panels connected together, assembled in ground level and lifted as a one unit to its location.



- The shoring is either ACROW Shore-brace System with high load capacity or Ring System with its modular components.
- Shoring also can be moved as one unit horizontally by Wheel Jack Units or vertically by crane.

► Formwork & Scaffolding Systems – climbing

► Crane climbing

- ACCB 240 features and benefits:

- Easy to erect
- Formwork Panel and Access Bracket can be lifted as one unit to accelerate work and reduce labor and crane cost.
- Retractable up to 75 cm .
- Less accessories and lost items, hence very economical.
- Easy to be adjusted .
- Safe against high wind load.
- Suitable for straight and curved walls.
- Has 3 Access levels so work is faster, more safe and easier.



► Self climbing

- ACROW is developing a new Self Climbing System where the same items of the Crane Climbing System are being used in addition to the rail, latches and Hydraulic units. This means maximum adaptability and usage of the system are achieved.



Contact Us

Head Office :

Address : 9 El-Diplomasien St.,
Othman Towers,
Nile Courniche, Maadi, Cairo, Egypt.
Tel. : (+202) 25255814
Fax : (+202) 25255824
Email : Info@aics-eg.com

Stores :

Address : Industrial zone, Wady Houf, Helwan,
Cairo, Egypt.
Tel. : (+2) 01008996272
Email : Mohamed.sharkawy@aics-eg.com

Engineering Solutions Sector :

Hassan Ibrahim
Board Director
Tel. : (+2) 01001771392
Email : Hassan.ibrahim@aics-eg.com

Formwork & Scaffolding Sector :

Technical Office Dep.

Yehea Mohamed
Technical office Engineer
Tel. : (+2) 01099613361
Email : Yehea.mohamed@aics-eg.com

Technical office Dep.

Mohamed Makkey
Technical Office Manager
Tel. : (+2) 01116767679
Email : Mohamed.makkey@aics-eg.com

Project Management Dep.

Hisham Badawy
Projects Manager
Tel. : (+2) 01099303033
Email : Hisham.badawy@aics-eg.com

Project Management Dep.

Ibrahim Farouk
Projects Manager
Tel. : (+2) 01091747008
Email : Ibrahim.farouk@aics-eg.com

Sales Dep.

Mohamed Arafa
Sales Manager
Tel. : (+2) 01002157040
Email : Mohamed.arafa@aics-eg.com

Mohamed Selim
Deputy Projects Manager
Tel. : (+2) 01002188771
Email : Mohamed.selim@aics-eg.com

Amaal Nashat
Sales Engineer
Tel. : (+2) 01005288801
Email : Amal.nashat@aics-eg.com